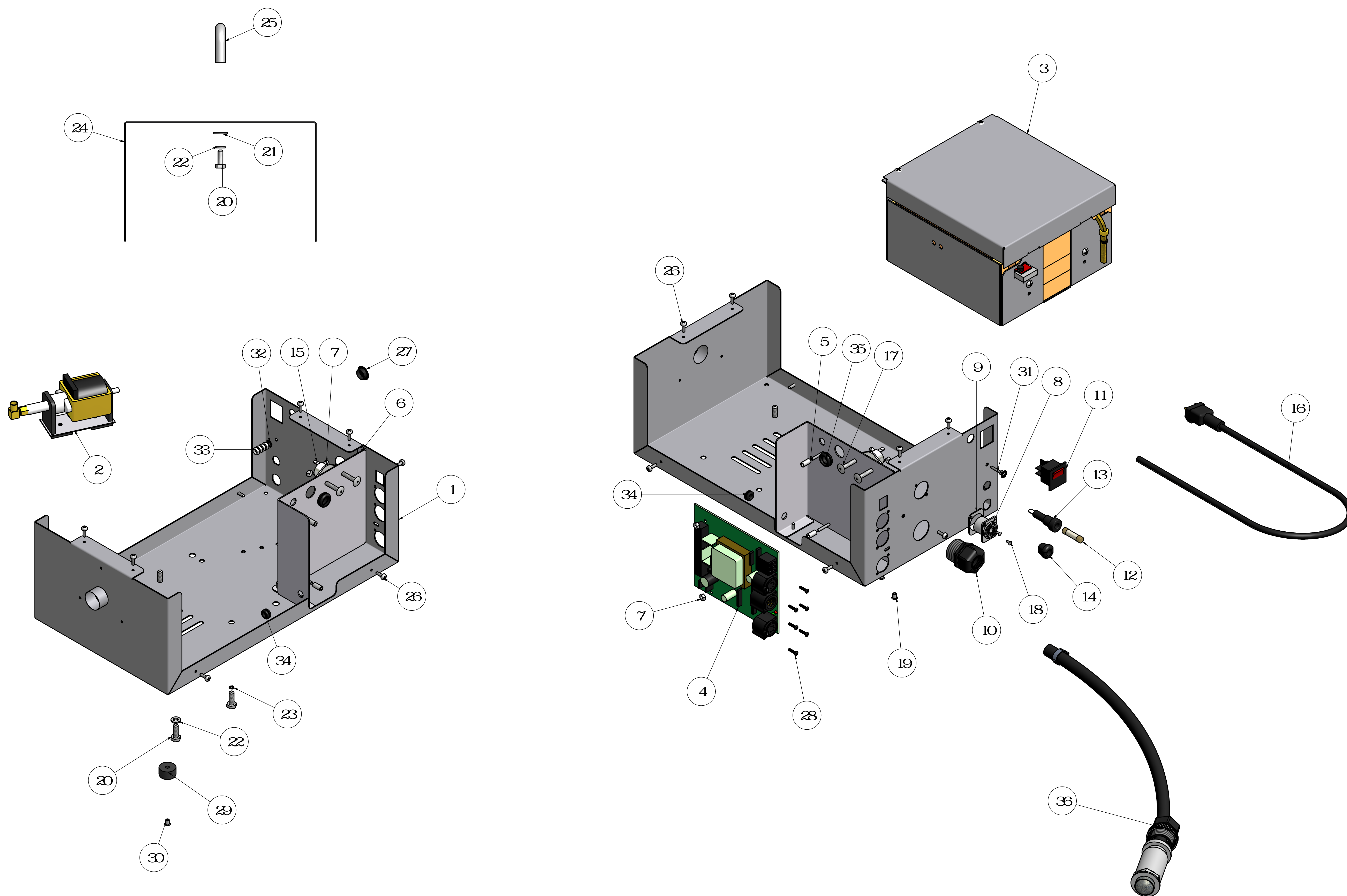


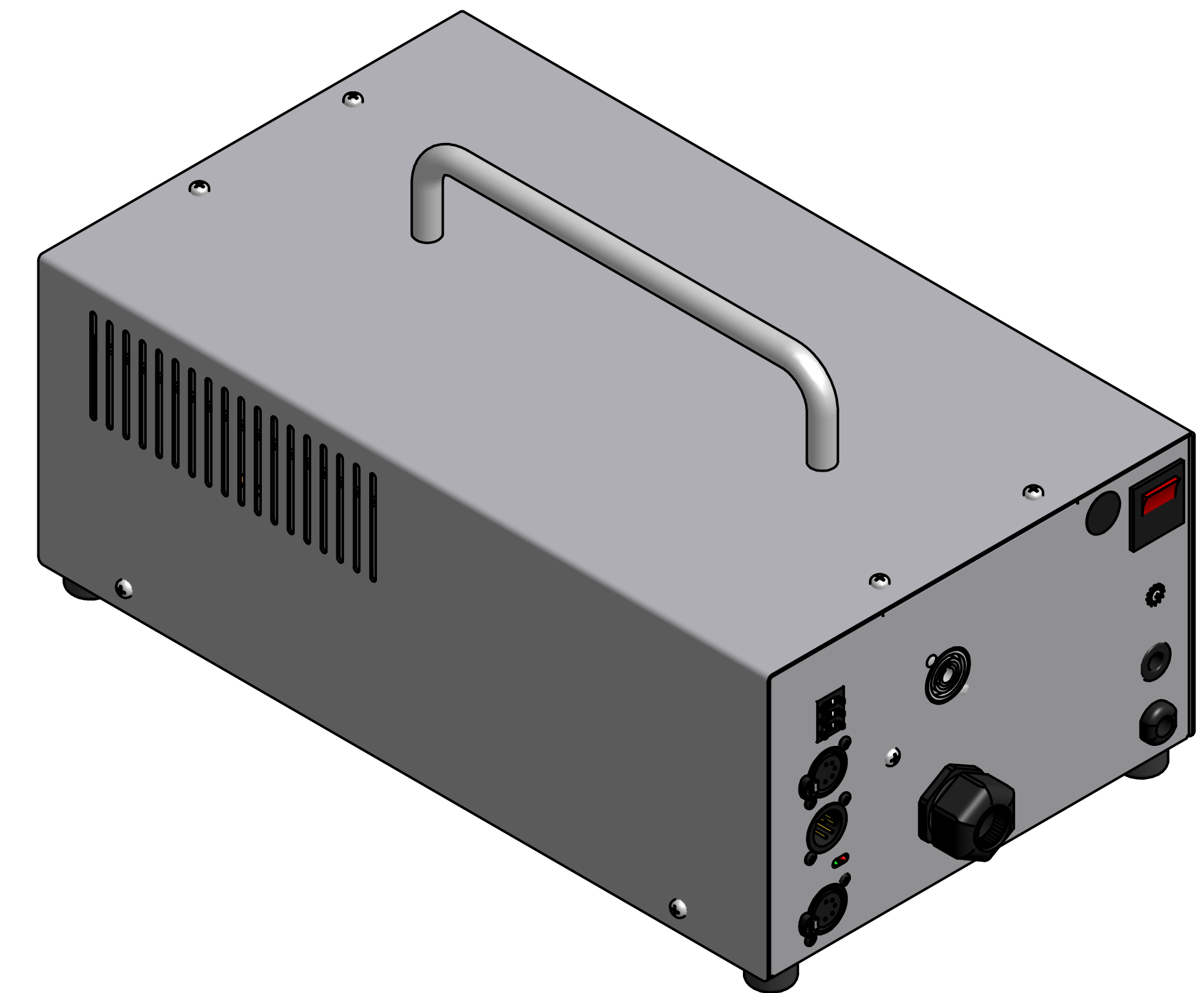
POWER FOGGER INDUSTRIAL 110V



PARTS LIST



POWER FOGGER INDUSTRIAL
110V



ITEM	QTY	SALES NUMBERS	DESCRIPTION
1	1		POWER FOGGER CHASSIS
2	1		PUMP ASSEMBLY
3	1	CXP 4065	STAGE FOGGER BLOCK REV.1 BULB/CAPILLARY
4	1	CXP 1675 CXP 1655	POWER/STAGE FOGGER PCB 5-PIN 110V REV.7 2-LED POWER/STAGE FOGGER PCB 5-PIN 220V REV.7 2-LED
5	2		1/2" STANDOFF
6	1		PFI/9D ALUMINUM BRACKET
7	4		# 6-32 LOCK NUT
8	1	CXP 4197	GREY NEUTRIK MALE CHASSIS POWER OUT
9	1		GREY NEUTRIK BLACK PLATE
10	1	CXP 1221	3/4" PLASTIC STRAIN RELIEF
11	1	CXP 3040	ILLUMINATED POWER SWITCH
12	1	CXP 1097	15 AMP FUSE 1.25"
13	1	CXP 1233	POWER/STAGE FOGGER FUSE HOLDER
14	1	CXP 4261	"D" PLUG FOR 14/3 CABLE
15	1	CXP 2475	HEATER TRIAC
16	1	CXP 6040	14/3 6' POWER CORD W/3 PRONG
17	2		# 6-32 X 1/2" PAN PHILIP B/O
18	2		1/8 X 1/2 " RIVET B/O
19	2		RIVETS - 3/16" X 3/8"
20	6		1/4" X 3/4" HEX BOLT PLATED GRADE 5
21	2		1/4" FLAT WASHER
22	5	CXP 4255	1/4" LOCK WASHER
23	1		1/4" EXTERNAL TOOTH LOCK WASHER
24	1		POWER FOGGER LID
25	1	CXP 7106	9" X 1/2" HANDLE PFI/SNOW/PRISM
26	12	CXP 1272	# 8 X 1/2" SELFTAPPING SCREW B/O
27	1		HOLE PLUG PFI/9D
28	6		# 4 X 1/2 PAN PHILLIPS HI-LO B/O
29	4	CXP 2436	MACHINE FEET - SET OF 4
30	4		RIVETS - 3/16" X 1/2"
31	1		8/32 X 3/4" PAN PHILIP HEAD B/O
32	2		# 8 EXTERNAL TOOTH STAR WASHER
33	4		8/32 STANDARD NUT
34	1		1/4" HOLE GROMMET THIN
35	1		3/8" RUBBER GROMMET
36	1		JUG HOSE ASSEMBLY

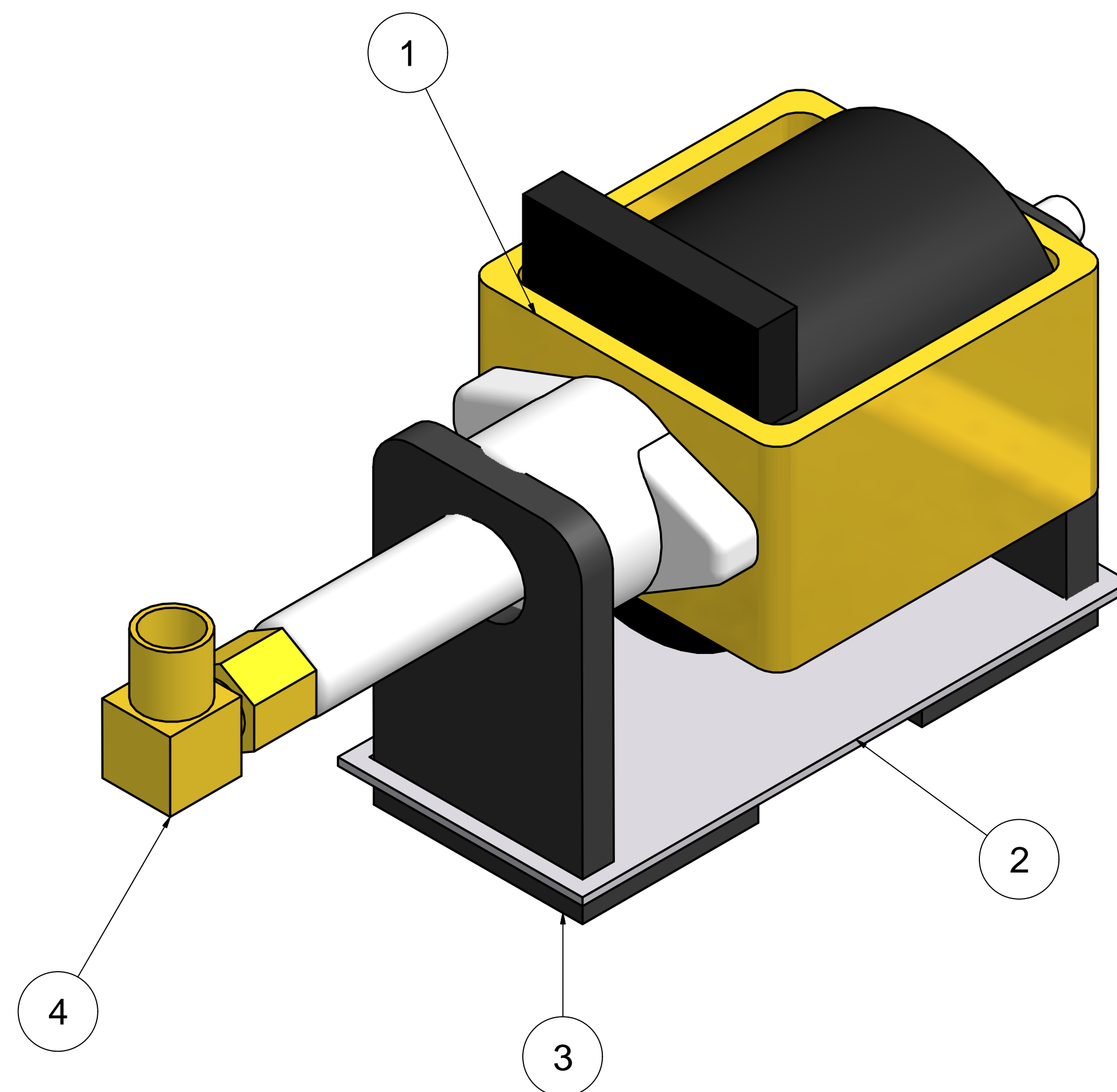
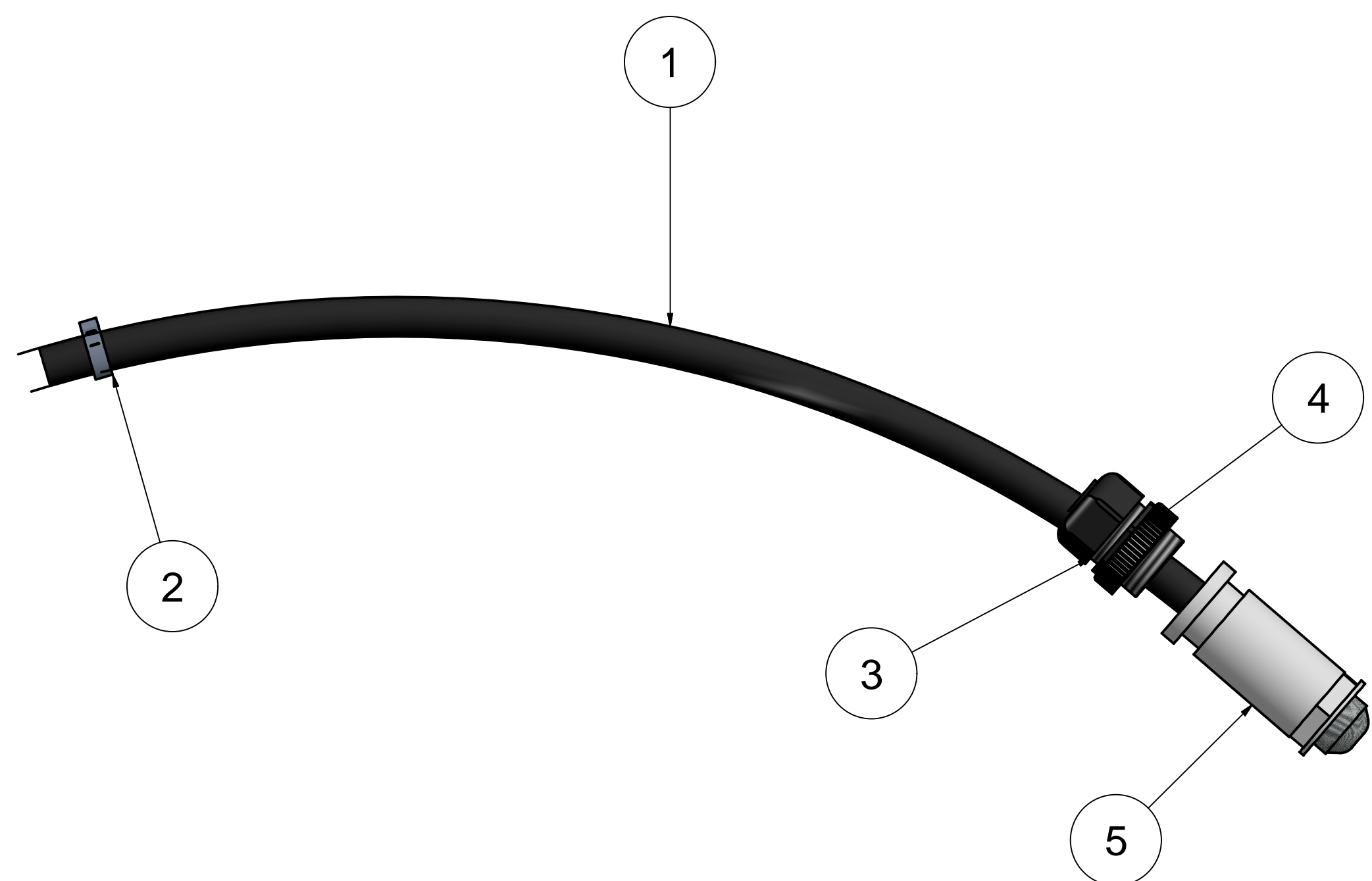
REVISION HISTORY

REV-#	DATE
A	27/09/2016



PUMP ASSEMBLY

JUG HOSE ASSEMBLY



PARTS LIST

ITEM	QTY	SALES NUMBERS	DESCRIPTION
1	1.524 M 5.000 LF(Linear Foot)	CXP 1216	1/4 ID BLACK PVC INDUSTRIAL HOSE
2	1	CXP 2060	5/8 S.S. INDUSTRIAL HOSE CLAMP
3	1	CXP 1221	3/4" PLASTIC STRAIN RELIEF
4	1		JUG CAPS WHITE (2LT / 4LT)
5	1	CXP 4290	INDUSTRIAL FILTER CHECK VALVE

PARTS LIST

ITEM	QTY	SALES NUMBERS	DESCRIPTION
1	1	CXP 4148 CXP 4150	PUMP 110V PUMP 220V
2	1	CXP 4258	PUMP BRACKET FLAT
3	2	CXP 4258	NEW STYLE PUMP RUBBERS
4	1	CXP 2431	3/16 PUMP ELBOW MALE - NORTH AMERICAN