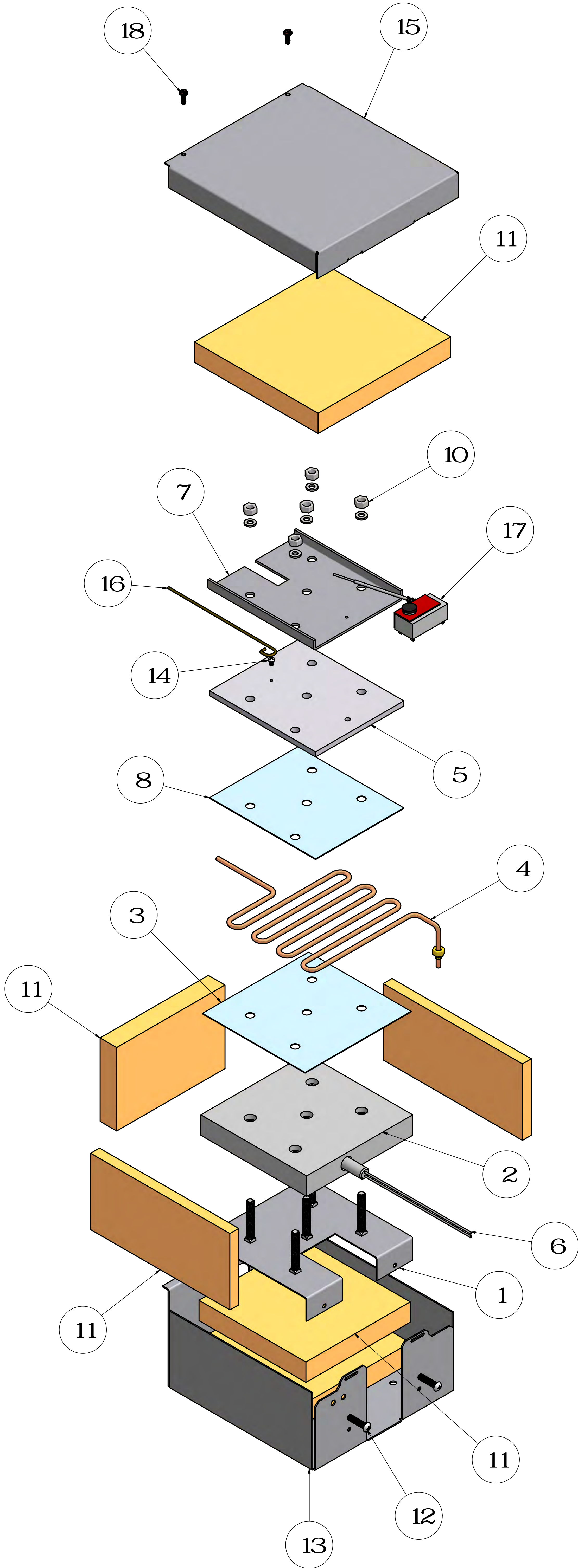
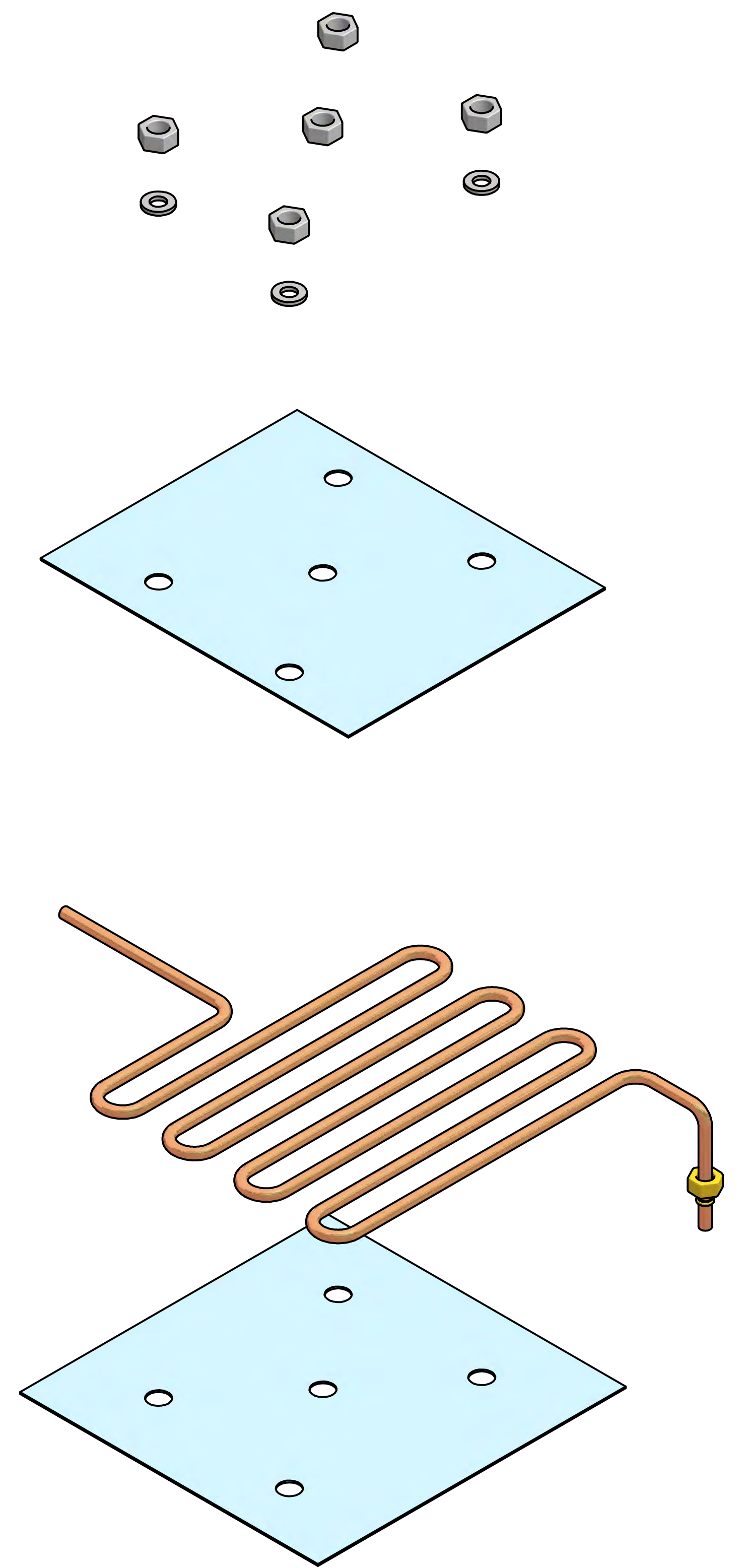


# PREMIER FOGGER BLOCK ASSEMBLY



## RAPID CHANGE KIT

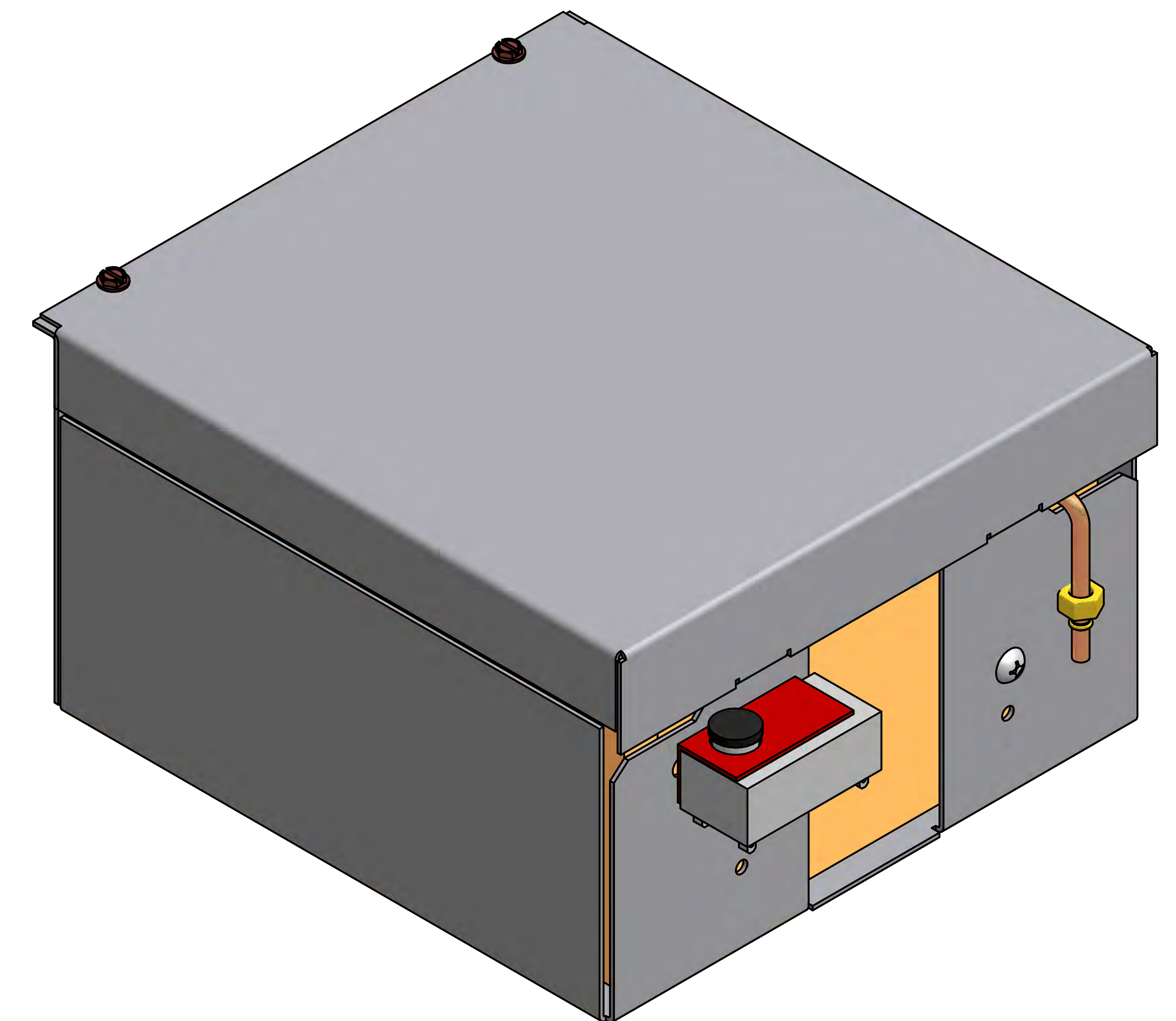




PARTS LIST

ITEM	QTY	SALES NUMBER	DESCRIPTION
1	1	CXP 1255	RAPID BLOCK BASE PLATE
2	1	CXP 4067	STAGE/FI/SD 1" ALUMINUM CARTRIDGE PLATE
3	1	CLF 4405	PREMIER FOGGER RAPID CHANGE REPLACEMENT KIT
4	1	CLF 4405	PREMIER FOGGER RAPID CHANGE REPLACEMENT KIT
5	1	CXP 4231	QUICK CHANGE ALUMINUM TOP PLATE 1/4"
6	1	CXP 4066 CXP 4068	STAGE/FI/SD 110V 1400W HEATER CARTRIDGE STAGE/FI/SD 240V 2000W HEATER CARTRIDGE
7	1	CXP 4239	ANTI WARP PLATE FOR BLOCK
8	1	CLF 4405	PREMIER FOGGER RAPID CHANGE REPLACEMENT KIT
9	5	CLF 4405	PREMIER FOGGER RAPID CHANGE REPLACEMENT KIT
10	5	CLF 4405	PREMIER FOGGER RAPID CHANGE REPLACEMENT KIT
11	1	CXP 2483	STAGE/SHOW/FI/SD INSULATION KIT
12	4	CXP 1257	# 12 X 2" PAN PHILLIP SCREW
13	1	CXP 1256	RAPID BLOCK HOLDER BASE
14	1		#6-32 X 1/4" PHILLIPS SCREW S.S
15	1	CXP 1258	RAPID BLOCK HOLDER LID
16	1	CXP 4005	NEW THERMOCOUPLE ASSEMBLY
17	1	CXP 7500	CAPILLARY THERMOSTAT ASSEMBLY
18	2	CXP 4237	8-32 X 1/2 IND FASTNER

PREMIER FOGGER BLOCK  
110V



REVISION HISTORY	
REV-#	DATE
A	13/09/2016