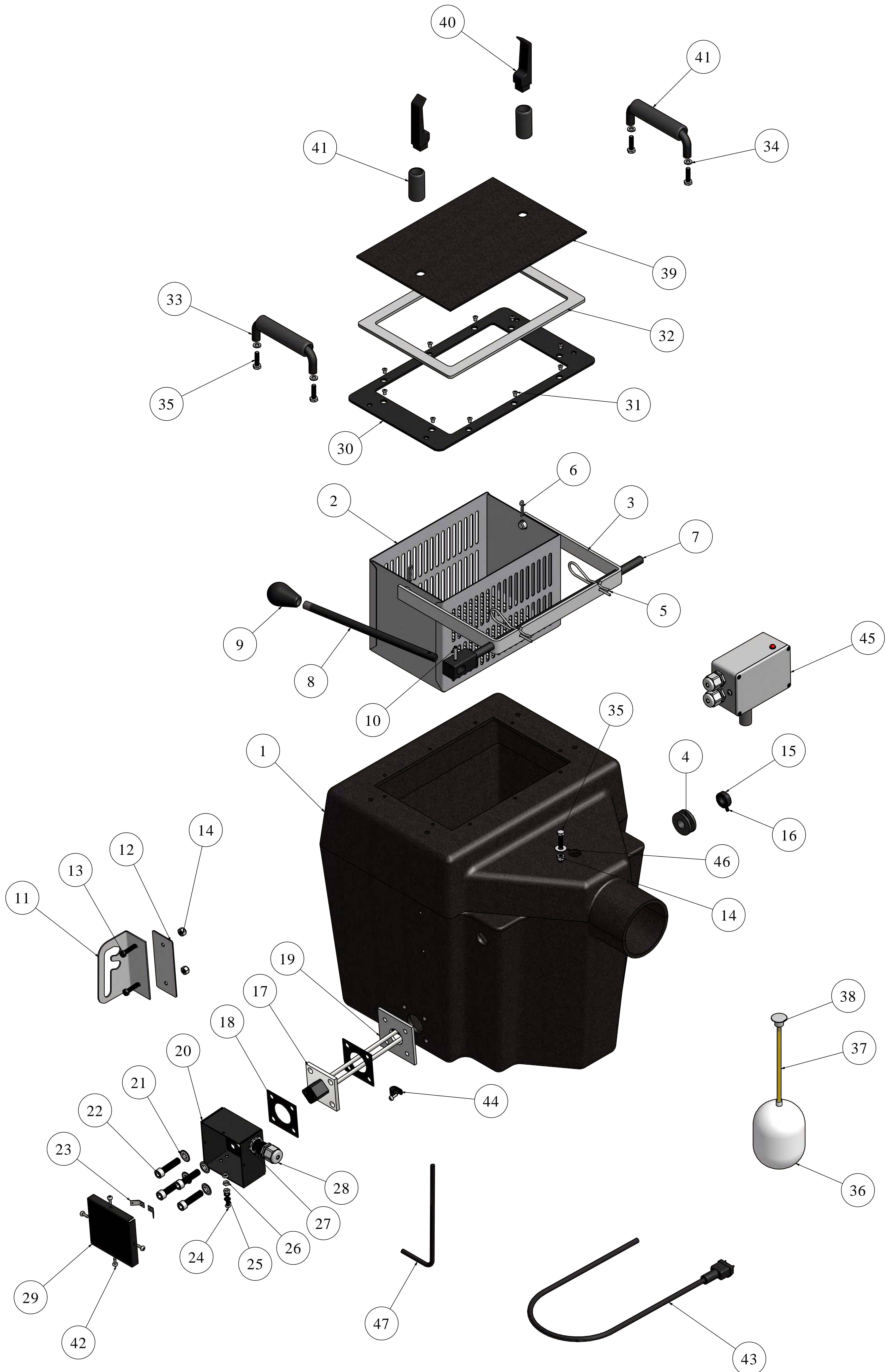


DRY ICER 110 V-REV-B



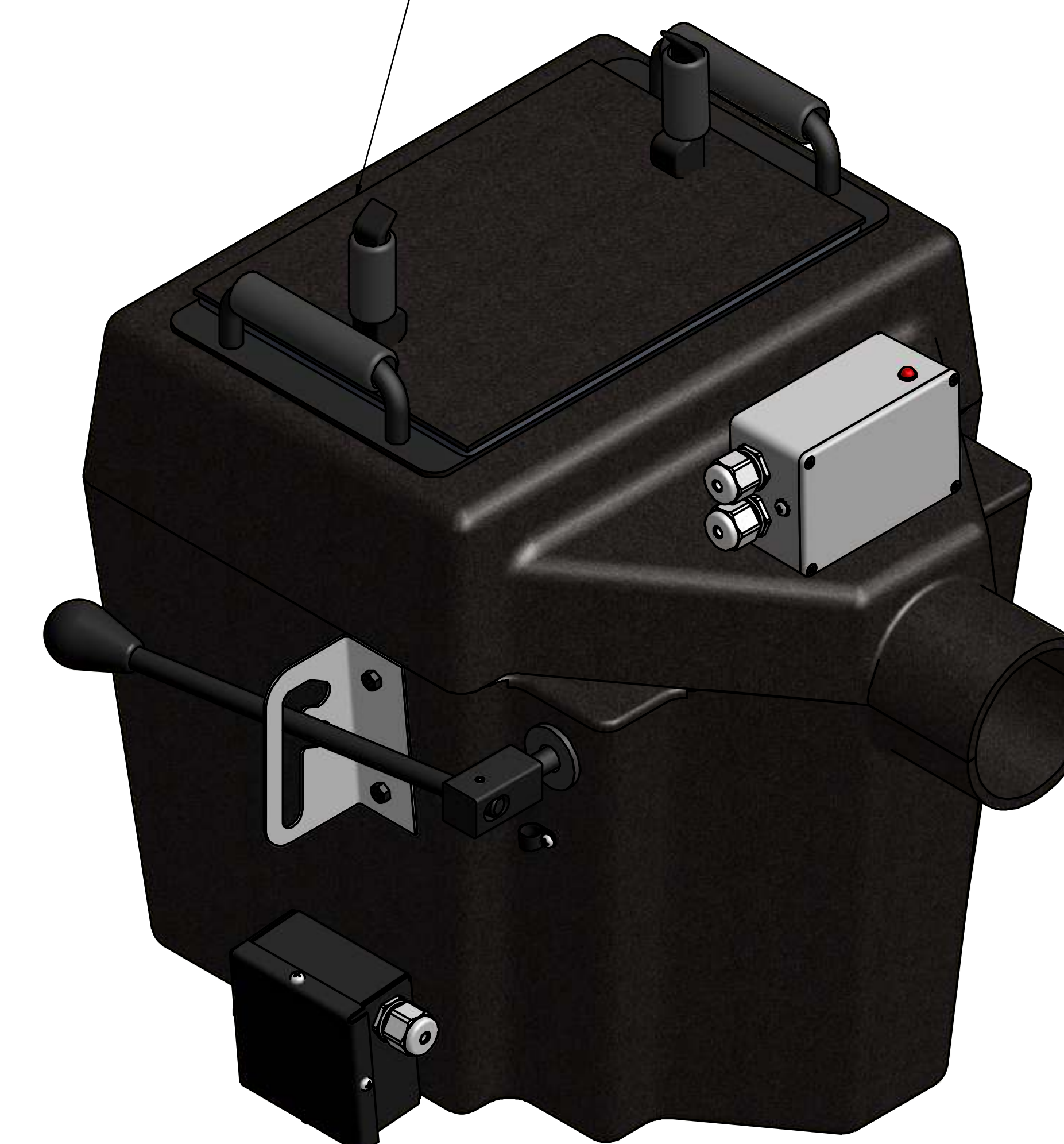
PARTS LIST

ITEM	QTY	SALES NUMBERS	DESCRIPTION
1	1	CXP 2204	DRY ICER BODY
2	1	CXP 2206	DRY ICER BASKET S.S.
3	1	CXP 2210	DRY ICER BASKET HOLDER
4	2	CXP 2205	DRY ICER HEAVY DUTY GROMMET
5	2		HITCH PIN CLIP ZINC
6	2		1/8" X 1" COTTER PIN S.S.
7	1		DRY ICER ROD AND BLOCK HANDLE
8	1		DRY ICER SHORT ROD HANDLE
9	1		DRY ICER OVAL KNOB FOR SHAFT ROD
10	1		DRY ICER SPRING TENSION PIN 3/16 X 1 S.S.
11	1		DRY ICER HANDLE INDEX PLATE
12	1		DRY ICER INDEX BACKER PLATE
13	2		1/4" X 1" HEX BOLT B/O
14	3		1/4 NYLON LOCKNUT S.S.
15	1		DRY ICER SET RING
16	1		DRY ICER 8-32 X 3/8 SOCKET SET SCREW
17	1	CXP 2199 CXP 2198	DRY ICER ELEMENT 110V (INCLUDES 2 GASKETS) DRY ICER ELEMENT ONLY 220V
18	2	CXP 2230	ELEMENT GASKET KIT
19	1		DRY ICER ELEMENT BACKING PLATE
20	1	CXP 2215	DRY ICER HEAT BOX CHASSIS
21	4	CXP 2215	3/8" BARTITE SEALING WASHER S.S.
22	4	CXP 2215	3/8 X 1-1/2 SOCKETHEAD S.S. BOLT
23	2	CXP 4257	G3000 FUSE CLIP
24	1	CXP 1294	# 8-32 X 3/4 PHILP PAN HEAD B/O
25	2		# 8 EXTERNAL TOOTH STAR WASHER
26	3		8/32 STANDARD NUT
27	1	CXP 1222	1/2" LOCKNUT CONDUIT
28	1	CXP 1222	1/2" PLASTIC STRAIN RELIEF
29	1	CXP 2215	DRY ICER HEAT BOX LID
30	1		DRY ICER COUNTER SUNK GASKET S.S.
31	10	CXP 2075	3/16" X 3/4" ALUMINUM RIVET
32	1	CXP 2208	LID GASKET (FOAM)
33	2	CXP 1239	5" ALUMINUM HANDLE 9D/DRY ICER
34	4	CXP 4255	LOCK W ASHER - 1/4"
35	5		1/4" X 1" S.S. BOLT
36	1	CXP 2211	DRY ICER FLOAT
37	1	CXP 2211	WATER LEVEL ROD FOR DRY ICER
38	1	CXP 2211	T-NUT
39	1	CXP 2207	DRY ICER LID
40	2	CXP 2209	DRY ICER LID HANDLES
41	2	CXP 2225	DRY ICER FOAM GRIPS
42	5	CXP 1272	# 8 X 1/2" SELF TAPPING SCREW B/O
43	1	CXP 6040	14/3 6' POWER CORD W /3 PRONG
44	1		DRY ICER SELF SEAT CLAMP
45	1		DRY ICER ELECTRICAL BOX REV-B
46	1	CXP 4286	1/4" FLAT WASHER
47	1		16/3 SJOW CABLE BLACK

DRY ICER REV-A



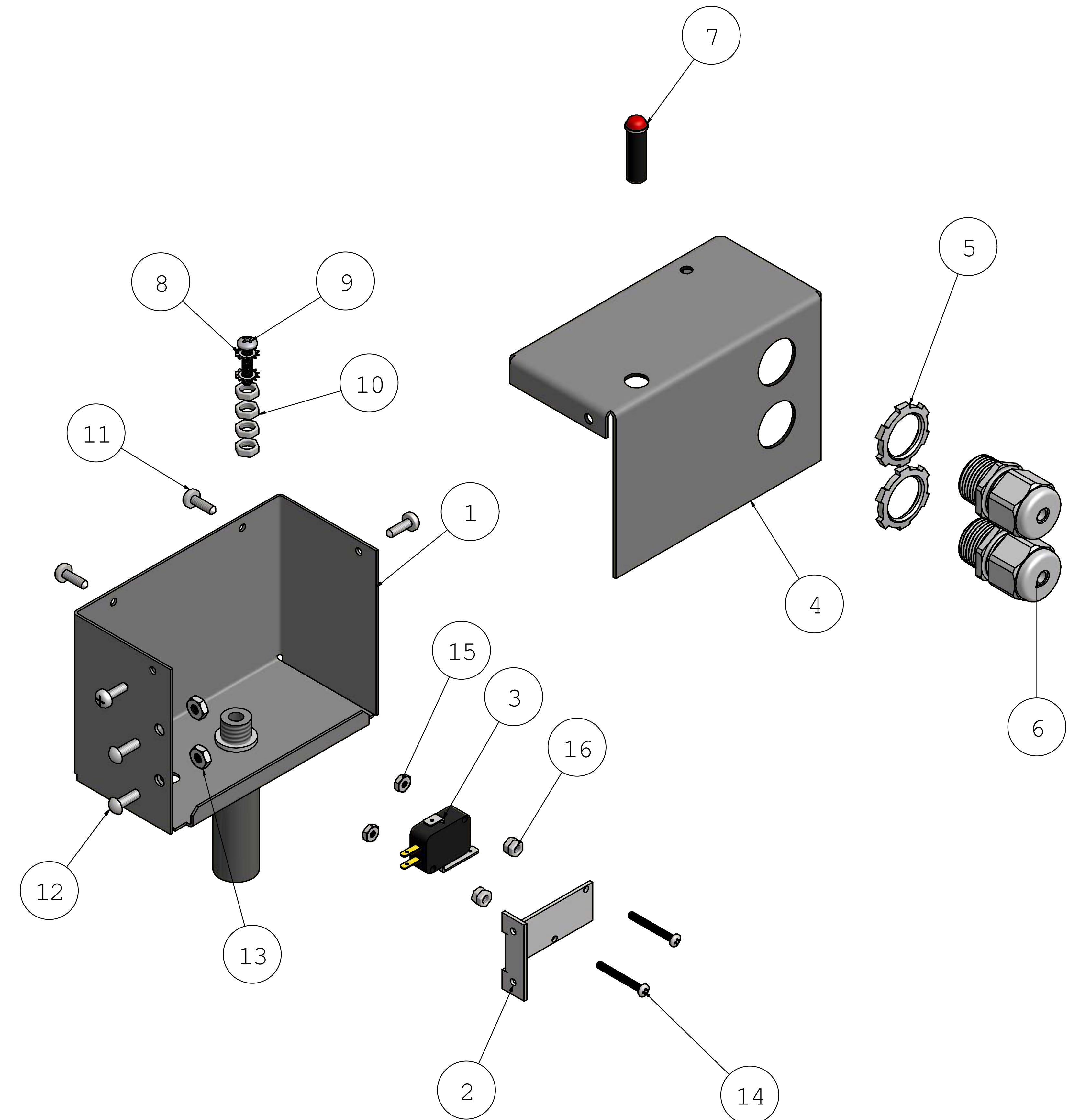
DRY ICER REV-B



PARTS LIST

ITEM	QTY	SALES NUMBERS	DESCRIPTION
1	1		DRY ICER ELECTRICAL BOX-BASE
2	1		M ICROSWITCH BRACKET
3	1	CXP 2220	DRY ICER M ICROSWITCH
4	1		DRY ICER ELECTRICAL BOX -LID
5	2	CXP 1222	1/2" LOCKNUT CONDUIT
6	2	CXP 1222	1/2" PLASTIC STRAIN RELIEF
7	1	CXP 3034	RED LED 110V (DRY ICER/LSX)
8	2		# 8 EXTERNAL TOOTH STAR WASHER
9	1	CXP 1294	# 8-32 X 3/4 PHILP PAN HEAD B/O
10	4		8/32 STANDARD NUT
11	4	CXP 1272	# 8 X 1/2" SELF TAPPING SCREW B/O
12	2		# 8-32 X 1/2 PAN BOLT
13	2	CXP 1296	8/32" NYLON LOCK NUT
14	2		4/40" X 1" PAN HEAD PHIL
15	2		4/40" NYLON LOCK NUT
16	4		6/32" STANDARD NUT

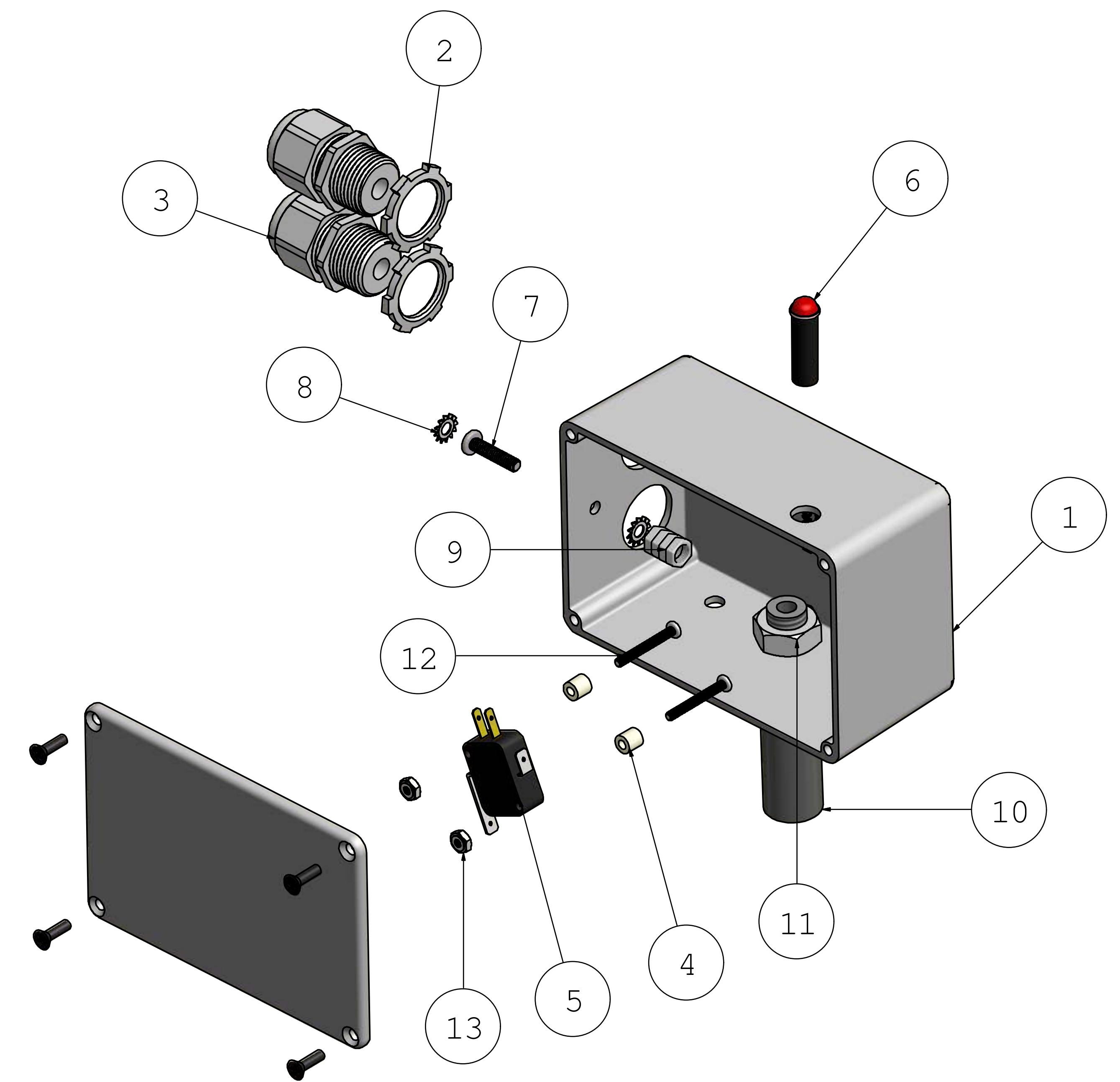
DRY ICER ELECTRICAL BOX-REV-A



PARTS LIST

ITEM	QTY	SALES NUMBERS	DESCRIPTION
1	1		DRY ICER ELECTRICAL BOX-REV-B
2	2	CXP 1222	1/2" LOCKNUT CONDUIT
3	2	CXP 1222	1/2" PLASTIC STRAIN RELIEF
4	2		1/4" STANDOFF
5	1	CXP 2220	DRY ICER MICRO SWITCH
6	1	CXP 3034	RED LED 110V (DRY ICER/LSX)
7	1	CXP 1294	# 8-32 X 3/4 PHILP PAN HEAD B/O
8	2		# 8 EXTERNAL TOOTH STAR WASHER
9	4		8/32 STANDARD NUT
10	1		3" 4L FDS FLOAT EXTENSION SPACER
11	1		1/2-13 HEX JAM NUT S.S.
12	2		4/40" X 1" PAN HEAD PH IL
13	2		4/40" NYLON LOCK NUT

DRY ICER ELECTRICAL BOX-REV-B



REVISION HISTORY	
REV-#	DATE
A	21/10/2016